

**12.5m
Frontage**



HART

3

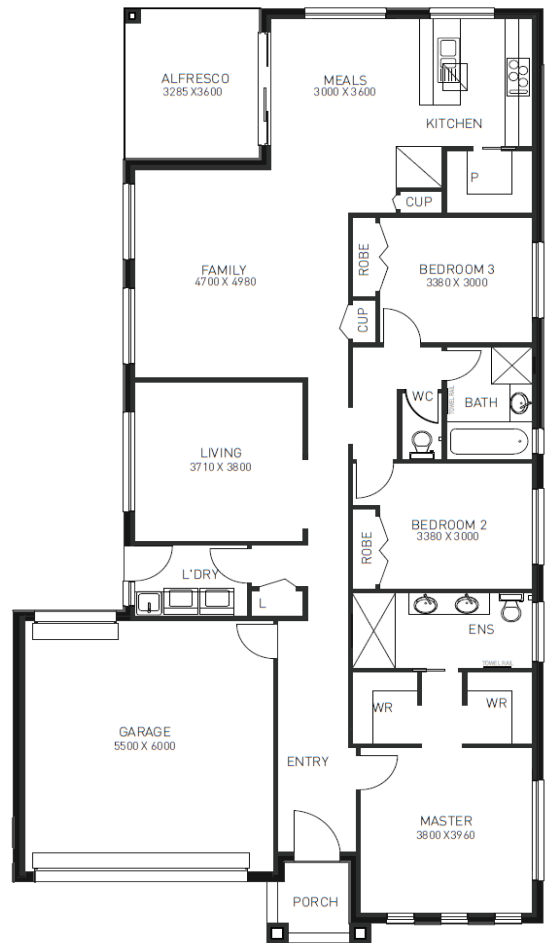
2

Price: \$603,700 2

Lot Number: 286 Paprika Parade
Botanical Estate: Mickleham
Land Size: 400sqm
Land Price: \$ 304,500 (Mar/Apr 19)
House Size: 23 total

Inclusions List:

- › 2550mm Ceiling height throughout
- › Feature sectional rendering to portico
- › Floor tiles to entry, passage, kitchen & meals areas
- › Carpet floor coverings to remaining areas
- › NBN requirements (Additional if required)
- › Flyscreens and keylocks to all openable windows
- › 900mm stainless steel gas cooktop
- › 900mm slide out rangehood
- › 900mm stainless steel oven
- › Dishwasher installed and included
- › Ducted Heating system
- › 1 x Split cooling system
- › Solar boosted HWS
- › LED downlights throughout 20 nos
- › 20 mm stone benchtop throughout
- › Complete turnkey package
- › **FIXED PRICE BASED ON "H" CLASS SLAB**



Contact

Mobile:
 Email:
 Web: