

**12.5m  
Frontage**



# HART

3

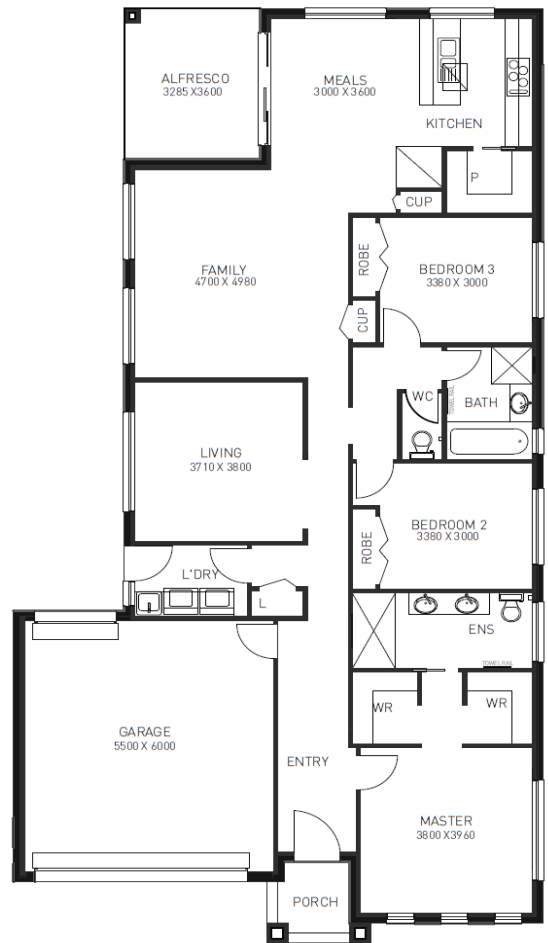
2

**Price: \$603,700** 2

**Lot Number: 287 Paprika Parade**  
**Botanical Estate: Mickleham**  
**Land Size: 400sqm**  
**Land Price: \$ 304,500 (Mar/Apr 19)**  
**House Size: 23 total**

## Inclusions List:

- › 2550mm Ceiling height throughout
- › Feature sectional rendering to portico
- › Floor tiles to entry, passage, kitchen & meals areas
- › Carpet floor coverings to remaining areas
- › NBN requirements ( Additional if required )
- › Flyscreens and keylocks to all openable windows
- › 900mm stainless steel gas cooktop
- › 900mm slide out rangehood
- › 900mm stainless steel oven
- › Dishwasher installed and included
- › Ducted Heating system
- › 1 x Split cooling system
- › Solar boosted HWS
- › LED downlights throughout 20 nos
- › 20 mm stone benchtop throughout
- › Complete turnkey package
- › **FIXED PRICE BASED ON "H" CLASS SLAB**



## Contact

Mobile:  
 Email:  
 Web: