

**12.5m  
Frontage**



# HART

3

2

**Price: \$598,200** 2

**Lot Number: 501 Cayenne Way**

**Botanical Estate: Mickleham**

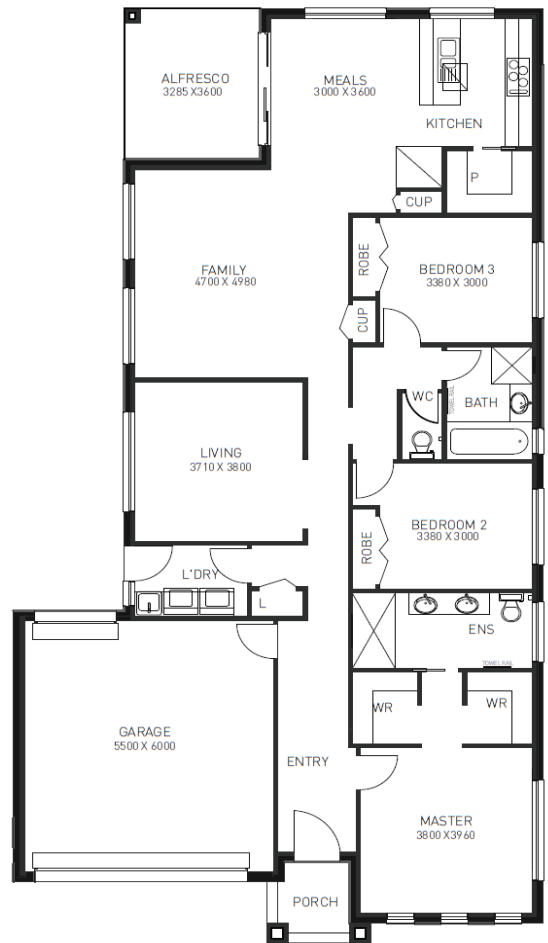
**Land Size: 400sqm**

**Land Price: \$ 304,500 (May/Jul 19)**

**House Size: 23 total**

### Inclusions List:

- > 2550mm Ceiling height throughout
- > Feature sectional rendering to portico
- > Floor tiles to entry, passage, kitchen & meals areas
- > Carpet floor coverings to remaining areas
- > NBN requirements ( Additional if required )
- > Flyscreens and keylocks to all openable windows
- > 900mm stainless steel gas cooktop
- > 900mm slide out rangehood
- > 900mm stainless steel oven
- > Dishwasher installed and included
- > Ducted Heating system
- > 1 x Split cooling system
- > Solar boosted HWS
- > LED downlights throughout 20 nos
- > 20 mm stone benchtop throughout
- > Complete turnkey package
- > **FIXED PRICE BASED ON "H" CLASS SLAB**



### Contact

Mobile:  
Email:  
Web: