

**12.5m
Frontage**



CARTER

 4

 2

Price: \$546,900  2

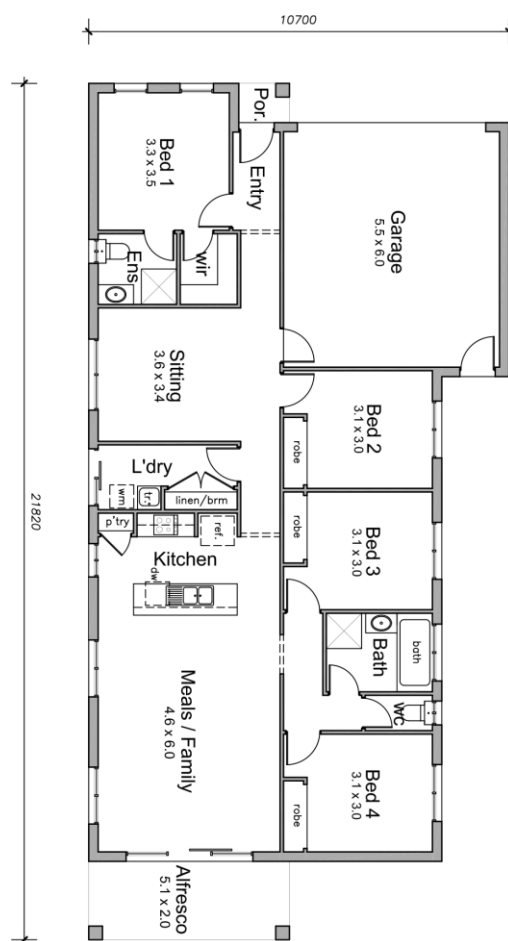
**Lot Number: 841 Ruthven Way
Windermere Estate: Mambourin
Land Size: 425sqm
Land Price: \$ 293,500
House Size: 21.5sq(200m²) total**

Inclusions List:

- > 2550mm Ceiling height throughout
- > Feature sectional rendering to portico
- > Floor tiles to entry, passage, kitchen & meals areas
- > Carpet floor coverings to remaining areas
- > NBN requirements (Additional if required)
- > Flyscreens and keylocks to all openable windows
- > 900mm stainless steel gas cooktop
- > 900mm slide out rangehood
- > 900mm stainless steel oven
- > Dishwasher installed and included
- > Ducted Heating system
- > 1 x Split cooling system
- > Solar boosted HWS
- > LED downlights throughout 20 nos
- > 20mm stone benchtop throughout except laundry
- > COMPLETE TURNKEY PACKAGE
- > **FIXED PRICE BASED ON "H" CLASS SLAB**
- > **SPECIAL FESTIVE OFFER : FREE EVAPORATIVE COOLING / CHOICE OF BRICK OR COLORBOND ROOF / CHOICE OF STEEL FRAME WITH 50 YRS WARRANTY OF TIMBER FRAME**

AREA SUMMARY

LIVING AREA	148 sq m
GARAGE	36 sq m
PORCH	1 sq m
ALFRESCO	10 sq m
TOTAL	195 sq m (21sq)



Contact

Mobile:

Email:

Web: www.6040homes.com.au